


## C-Soft Plus 1.10 4X440=V1.10

 Instructions for use (qualified personnel) .....	3
--	---



- 1 Foreword .....4**
- 2 Product description .....4**
  - 2.1 Function.....4
  - 2.2 Combination possibilities .....4
- 3 Intended use .....4**
  - 3.1 Indications for use .....4
  - 3.2 Conditions of use .....4
  - 3.3 Contraindications .....4
  - 3.4 Qualification .....4
- 4 Safety .....5**
  - 4.1 Explanation of warning symbols.....5
  - 4.2 Structure of the safety instructions.....5
  - 4.3 General safety instructions .....5
- 5 Scope of delivery .....6**
- 6 System Requirements.....7**
  - 6.1 Minimum PC Hardware Requirements .....7
  - 6.2 Supported operating systems .....7
  - 6.3 Additional Recommended Software Components.....7
  - 6.4 Additional Installed Software Components .....7
- 7 Installation .....7**
  - 7.1 Continue Installation Without Registration .....8
  - 7.2 Continue Installation With Registration.....9
- 8 Data Transfer between the Prosthesis and PC.....10**
  - 8.1 Establishing a Bluetooth Connection to the Prosthesis .....10
- 9 Starting the Program .....11**
- 10 Closing the Program .....12**
- 11 Uninstalling .....12**
- 12 Further Information .....12**
  - 12.1 Information Regarding the Online Help .....12
  - 12.2 Obtaining Program Version Information.....12
  - 12.3 Software Updates.....12
- 13 Troubleshooting .....13**
- 14 Trademarks .....13**
- 15 CE conformity .....14**
- 16 Symbols Used .....14**
- Licence Agreement .....14**

# 1 Foreword

## INFORMATION

Date of last update: 2021-12-21

- ▶ Please read this document carefully before using the product and observe the safety notices.
- ▶ Please contact the manufacturer if you have questions about the product or in case of problems.
- ▶ Report each serious incident related to the product to the manufacturer and to the relevant authority in your country. This is particularly important when there is a decline in the health state.
- ▶ Please keep this document for your records.

The "4X440=V1.10 C-Soft Plus 1.10" adjustment software is referred to below as C-Soft Plus, software or adjustment software.

Only put the product into use in accordance with the information contained in the accompanying documents supplied.

## 2 Product description

### 2.1 Function

The "C-Soft Plus" software is designed for the patient-specific adjustment of the products 3C98-3=\*, 3C88-3=\*. The integrated alignment recommendation supports optimum adaptation of the component to the patient.

Communication between the software and the prosthesis takes place exclusively via Bluetooth data transfer.

### 2.2 Combination possibilities

#### Supported Bluetooth adapter

- 60X5 BionicLink PC

#### Products that can be adjusted

- 3C88-3=\*, 3C98-3=\*

## 3 Intended use

### 3.1 Indications for use

The "C-Soft Plus" software is designed for the patient-specific adjustment of the products 3C88-3=\*, 3C98-3=\*.

### 3.2 Conditions of use

- For the software to be able to be used, the PC must fulfil the system requirements.
- The battery of the prosthesis must be charged.

### 3.3 Contraindications

- All conditions which contradict or go beyond the specifications listed in the section on "Safety" and "Indications for use".

### 3.4 Qualification

The adjustment software may only be used by qualified personnel that has participated in the relevant product training and has been certified for the application. Additional product training courses may become necessary to qualify for software updates.

## 4 Safety

### 4.1 Explanation of warning symbols

**⚠ WARNING** Warning regarding possible serious risks of accident or injury.

**⚠ CAUTION** Warning regarding possible risks of accident or injury.

**NOTICE** Warning regarding possible technical damage.

### 4.2 Structure of the safety instructions

**⚠ WARNING**

#### **The heading describes the source and/or the type of hazard**

The introduction describes the consequences in case of failure to observe the safety instructions. Consequences are presented as follows if more than one consequence is possible:

- > E.g.: Consequence 1 in the event of failure to observe the hazard
- > E.g.: Consequence 2 in the event of failure to observe the hazard
- ▶ This symbol identifies activities/actions that must be observed/carried out in order to avert the hazard.

### 4.3 General safety instructions

**⚠ WARNING**

#### **Non-observance of safety notices**

Personal injury/damage to the product due to using the product in certain situations.

- ▶ Observe the safety notices and the stated precautions in this accompanying document.

**⚠ WARNING**

#### **Outdated version of the product information on the data carrier**

Personal injury/damage to the product may result from insufficient information about product handling.

- ▶ Please note that the product information on the data carrier may not be current.
- ▶ Please refer to the product information included with each respective delivery or handed out during product training.
- ▶ To find out whether your product information is up to date, please contact an authorised Ottobock Service Centre.

**⚠ CAUTION**

#### **Operator errors when adjusting settings using the adjustment software**

Falling due to unexpected prosthesis behaviour.

- ▶ Do not charge the prosthesis battery during the adjustment process since the prosthesis is not functional while the battery is being charged.
- ▶ During the adjustment process, the prosthesis must not remain unattended when connected to the adjustment software while being worn by the patient.
- ▶ Observe the maximum range of the Bluetooth connection and note that obstacles may limit this range.
- ▶ During the data transfer (PC to prosthesis), the prosthesis wearer should sit or stand still, and the BionicLink PC must not be removed from the computer.

- ▶ If you want to make only temporary changes to the settings while connected to the adjustment software, you must reverse these changes before disconnecting the adjustment software.  
You must also ensure the patient does not leave the range of the Bluetooth connection if settings have been changed temporarily.
- ▶ Inform the patient immediately if the data connection is accidentally interrupted during the adjustment process.
- ▶ The connection to the prosthesis must always be disconnected after adjustments have been completed.
- ▶ Successful participation in an Ottobock product training course is mandatory prior to initial use. Additional product training courses may be required to qualify for software updates.
- ▶ The correct input of the foot size, prosthesis dimensions, body weight and calibration are important criteria for achieving a quality fitting. If the values are too high, the prosthesis may not switch to the swing phase. If the values are too low, the prosthesis may trigger the swing phase at the wrong time.
- ▶ If the patient uses walking aids (e.g., crutches or walking canes) during the adjustment process, you will need to readjust the settings when the patient no longer requires these aids.
- ▶ Use the online help function integrated into the software.
- ▶ Do not disclose your personal access data.

#### NOTICE

#### **Connecting the data carrier to a USB connection that is not easily accessible on the computer**

In the event of a fault, you will not be able to disconnect the power supply to the data carrier immediately.

- ▶ Connect the data carrier only to USB connections that can be easily accessed on the computer.

#### INFORMATION

- ▶ Please note that observing the prescribed system requirements is mandatory.
- ▶ It is recommended that you do not run any other programs during installation and use of the adjustment software, since this can affect performance.
- ▶ If you require further information, contact the Ottobock office responsible for your country.

#### INFORMATION

#### **Cybersecurity**

- ▶ Keep your operating system up to date and always install any available security updates.
- ▶ Protect your computer from unauthorised access (e.g., by using virus scans, password protection etc.).
- ▶ Do not use unsecured networks.
- ▶ Please contact the manufacturer if you suspect cybersecurity problems.

## **5 Scope of delivery**

- 1 pc. 4X440=V1.10 C-Soft Plus 1.10 USB data carrier
- 1 pc. Instructions for use (qualified personnel)

## 6 System Requirements

### 6.1 Minimum PC Hardware Requirements

The minimum hardware requirements for installation/use of the adjustment software apply independently of the operating system being used. If the minimum requirements for using the operating system are higher than the hardware requirements described here, the minimum requirements for the operating system apply.

- PC with an Intel Core2 processor (x64) or faster
- 2 GB RAM
- At least 5 GB free hard drive space
- Graphics card with Open GL support
- Resolution 1280 x 768
- Display scale 100% or 96 DPI (settings above 150% can cause display problems depending on the chosen resolution)
- 32-bit colour depth (16.7 million colours)
- 1 free USB connection 2.0 or higher
- Mouse and keyboard

### 6.2 Supported operating systems

The following 64-bit operating systems are supported:

#### INFORMATION

32-bit operating systems are no longer supported.

- Microsoft Windows 7, SP1 or higher, all editions except Microsoft Windows 7 Starter
- Microsoft Windows 10

#### INFORMATION

Please note that the latest USB driver version must always be installed for the Bluetooth connection via the 60X5 BionicLink PC. You can download the latest driver version from the following site: <http://ottobock.com/en/datastation/>. The latest version can also be downloaded via the "software update" function (see page 12).

### 6.3 Additional Recommended Software Components

The following software components are recommended:

- Internet browser
- An installed program for sending e-mail (e.g. Microsoft Outlook, Mozilla Thunderbird...).

### 6.4 Additional Installed Software Components

The following additional software components are required and installed during installation of the software (if they are not already installed on the PC):

- Microsoft .NET Framework 4.5.2

#### INFORMATION

Before the installation is started, the installation program checks if there is sufficient free space on the hard drive and returns an error message if this is not the case. If this occurs, a corresponding amount of space must be freed up on the hard drive. All components required by the Ottobock software are copied to the hard drive automatically by the installation program.

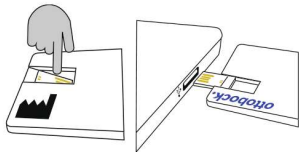
## 7 Installation

### Installation information

- Please note that observing the prescribed system requirements is mandatory.

- It is recommended that you do not run any other programs during installation and use of the adjustment software, since this can affect performance.
- You must have administrator rights to install the software.


### Carrying out the installation



- 1) Start Microsoft Windows.
- 2) If necessary, poke the USB data carrier out from the card.  
**INFORMATION: The data carrier cannot be detached from the card.**
- 3) Connect the data carrier to a freely accessible USB connection. The golden contacts should face upwards.  
→ Microsoft Windows will automatically recognise the data carrier.
- 4) Follow the on-screen instructions to perform the installation.

### INFORMATION

#### The installation does not start automatically

- ▶ Open "Computer" (key combination [Windows logo key +E])
- ▶ Click the folder with the Data Station symbol .
- ▶ Start the installation by double-clicking "**setup**" or "**setup.exe**".

After the installation program starts, follow the on-screen instructions.

**Information: fields marked with an asterisk (\*) are mandatory.**

When the "**Registration result**" window is displayed, the following options are available to continue the installation:

- Continue installation without registration
- Continue installation with registration

### 7.1 Continue Installation Without Registration

If you do not want to register, click the "**Skip registration**" button and follow the further instructions of the installation wizard.





Once installation is complete, an icon for starting the Ottobock Data Station is added to the Windows desktop. The "C-Soft Plus" software can be accessed after the Ottobock Data Station has been started.

The Ottobock Data Station is a superordinate software platform used to launch the corresponding programs. For this reason a separate icon for the "C-Soft Plus" software is not created during installation.

## 7.2 Continue Installation With Registration

In order to register, enter the company information and then click the "**Next**" button.

When the summary of the data already entered appears, the following possibilities (buttons) are available for registering the software:

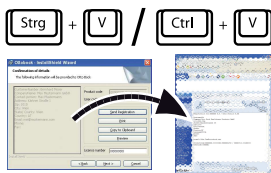
### Standard e-mail program available ("**Send registration**" button)



If you are able to send emails using a standard email program (e.g. Microsoft Outlook, Mozilla Thunderbird), carry out the following steps:

1. Click the "Send registration" button.  
An email with the required registration data is sent automatically.

### Webmail available ("**Copy to Clipboard**" button)



If you do not use a standard email program, but have access to the Internet from your PC, carry out the following steps:

1. Click the "**Copy to Clipboard**" button.
2. Paste the contents of the clipboard into the text field of your webmail email client (e.g. Gmail, Yahoo ...) with the key combination [Ctrl+V] or with the right mouse button.

**Information: automatic processing is only possible when this method is used.**

3. Send the email to the following address:  
**registration.austria@ottobock.com**

## Fax available ("Print" button)



If you do not have an Internet connection, carry out the following steps:

1. Click the "Print" button to make a printed copy.
2. Send the printout by fax to the following address:  
**(+43-1) 526 79 85 • Otto Bock Healthcare Products GmbH • Brehmstraße 16 • 1110 Vienna • Austria.**

Follow the subsequent instructions of the installation wizard.



Once installation is complete, an icon for starting the Ottobock Data Station is added to the Windows desktop. The "C-Soft Plus" software can be accessed after the Ottobock Data Station has been started.

The Ottobock Data Station is a superordinate software platform used to launch the corresponding programs. For this reason a separate icon for the "C-Soft Plus" software is not created during installation.

## 8 Data Transfer between the Prosthesis and PC

Prosthesis settings using the adjustment software can only be made via Bluetooth data transfer. In order to do so, a Bluetooth wireless connection must be established between the prosthesis and the PC with the help of the 60X5 BionicLink PC. To install the 60X5 BionicLink PC for the first time, follow the procedure described in the instructions for use supplied with this adapter.


### INFORMATION

Do not disconnect the 60X5 BionicLink PC from the PC when there is an active Bluetooth connection.

### INFORMATION

The adjustment software does not support the 60X4 (Anycam) BionicLink PC adapter.

### 8.1 Establishing a Bluetooth Connection to the Prosthesis

- 1) Note the serial number of the component you want to connect.
  - 2) Connect/disconnect the battery charger, or  
Hold the prosthesis with the knee head down (turn it upside-down), keep it still and wait for feedback signals.  
**Information:** If no feedback signals are produced, this may have the following causes: Feedback signal volume reduced, prosthesis battery drained or prosthesis switched off.
  - 3) Click the **"Connect"** button within 2 minutes and, in the window that opens, select the corresponding component from the list according to the serial number.  
**Information:** The Bluetooth function or Bluetooth recognition of the component is turned off after 2 minutes. When a connection with the PC is active (the  icon is lit up), the Bluetooth function is not switched off automatically.
- After successfully establishing a connection to the PC using the 60X5 BionicLink PC, the blue LED on the prosthesis and the blue LED of the BionicLink PC flash.

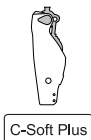
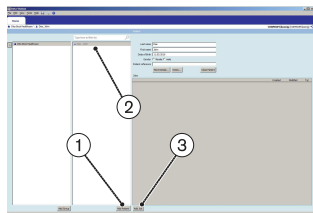
### INFORMATION

If the connection is reestablished within a previously opened job after the connection was lost, no steps are required for recognition of the component.

## 9 Starting the Program


### INFORMATION

To run the software, ensure that the user is logged on to the PC with at least standard user rights.



C-Soft Plus



- Double-click the  icon (Ottobock Data Station) on the desktop. The program starts.
- After the Ottobock Data Station has been started the first step is to create a new patient record (click the "Add Patient" button) (item 1) or select an existing patient record (item 2).  
**Information: fields marked with an asterisk (\*) are mandatory.**
- Click the "Add Job" button (item 3).
- Click the "C-Soft Plus" button. You will find this on the "Prosthetic Lower Extremity" tab.
- Prior to first use, the corresponding information has to be entered into the "Username" and "Unlock-PIN" fields.  
**Information: Make sure to use correct spelling (upper/lower case) when entering the information.**
- Click the "Log On" button.
- After entering the **unlock PIN** and clicking the "Log On" button you will be asked to enter and confirm a password of your own choice.  
**Information: the password entry window only appears after you have entered the unlock PIN. If you have already entered a password in the previous step, the password entry screen will not appear.**
- Click the "OK" button.




- Next, the screen for establishing the connection to the prosthesis appears.

**Information: The tube adapter configuration tool can be used without a connection to the prosthesis by clicking the  symbol.**

- Click the "Connect" button to establish a connection with the prosthesis.

If there are several prostheses within range, compare the serial number shown with the serial number of the prosthesis with which you want to connect.

**Information: The serial number is found on the inside of the knee joint frame.**

- Once the connection to the prosthesis has been established, the  symbol appears in the top right corner.

### INFORMATION

If the connection is disrupted during operation, see the section "Troubleshooting" (see page 13).

## 10 Closing the Program

The following options are available for closing the program:

- Click "File > Exit" in the menu bar
- Click the "X" button in the top right corner of the program window
- Press the key combination [Alt+F4]

## 11 Uninstalling

To uninstall the Ottobock software, use the Windows uninstall function.

All components of the adjustment software are deleted during the uninstall. If another adjustment software is installed within the Data Station, the Data Station remains, otherwise it is deleted as well.

**However, the entered patient data are not deleted.**


## 12 Further Information

### 12.1 Information Regarding the Online Help

#### General Online Help

The online help can be accessed via the **F1** button or the "Help > Contents ..." menu bar.

#### Online help for the currently displayed page

Information on the page currently being displayed in the adjustment software can be accessed by clicking the  symbol.

### 12.2 Obtaining Program Version Information

The current program version of the installed software can be obtained from the menu bar. You should have this information available whenever you contact the software support.

- 1) Click "Help > About" in the menu bar.  
→ A window with the currently installed software will open.
- 2) Click on the desired entry to obtain further information.


### 12.3 Software Updates

- 1) Click "**Help > About**" in the menu bar of the Data Station when you are connected to the Internet.

- The window opens with the versions of the previously installed programs and the manufacturer's address.
- 2) Click the "**Check for updates**" button in this window.
  - A search for updates of previously installed software products and components is performed via the Internet.
- 3) If updates are available, click "**Download**" in the column on the right in order to download and save the update.
- 4) Extract the "ZIP file" and execute it.

### 13 Troubleshooting

#### Causes of connection errors ( symbol appears)

If the  symbol appears in the software's user interface, the connection to the prosthesis was severed.

Verify operational readiness of the 60X5 BionicLink PC and the prosthesis using the table below. Eliminate any causes that apply.

Event	Cause/required action
The blue LED on the prosthesis is not lit up	Prosthesis switched off <ul style="list-style-type: none"> <li>• Connect/disconnect the battery charger on the prosthesis to turn the prosthesis on.</li> </ul>
	Bluetooth on the prosthesis is switched off <ul style="list-style-type: none"> <li>• Rotate the prosthesis by 180° (the sole of the foot has to face up) or connect/disconnect the battery charger to turn on Bluetooth for approx. 2 minutes. You must attempt to connect again during this time.</li> </ul>
	Prosthesis battery drained <ul style="list-style-type: none"> <li>• Charge the prosthesis battery.</li> </ul>
The blue LED on the prosthesis is lit up continuously	Connection to the PC disrupted because the distance to the prosthesis is too large <ul style="list-style-type: none"> <li>• Reduce the distance between the prosthesis and the 60X5 BionicLink PC.</li> </ul>
The green LED on the 60X5 BionicLink PC is not lit up	The 60X5 BionicLink PC is not operational <ul style="list-style-type: none"> <li>• Check the connection of the BionicLink on the PC.</li> <li>• Connect the BionicLink to a different USB port on the PC.</li> <li>• If a hub is being used, connect the BionicLink directly to the USB port on the PC.</li> </ul>
The blue LED on the 60X5 BionicLink PC is not lit up	Connection to the PC disrupted because the distance to the prosthesis is too large <ul style="list-style-type: none"> <li>• Reduce the distance between the prosthesis and the 60X5 BionicLink PC.</li> </ul>

Once the blue LED on the prosthesis and the green LED on the 60X5 BionicLink PC light up after eliminating the cause of the problem, start another connection attempt.

If a connection still cannot be established, contact the Ottobock branch responsible for your country.

When the connection has been restored, check the most recently configured settings.

### 14 Trademarks

All product names mentioned in this document are subject without restriction to the respective applicable trademark laws and are the property of the respective owners.

All brands, trade names or company names may be registered trademarks and are the property of the respective owners.

Should trademarks used in this document fail to be explicitly identified as such, this does not justify the conclusion that the denotation in question is free of third-party rights.

Microsoft, Outlook and Windows are registered trademarks of Microsoft Corporation.

Pentium, Intel and Intel Core are registered trademarks of Intel Corporation.

## 15 CE conformity

Otto Bock Healthcare Products GmbH hereby declares that the product is in compliance with applicable European requirements for medical devices.

The full text of the regulations and requirements is available at the following Internet address: <http://www.ottobock.com/conformity>

## 16 Symbols Used



Manufacturer



Declaration of conformity according to the applicable European directives



Article number

## Licence Agreement

### Manufacturer: see back of this document

PLEASE READ THIS END USER LICENCE AGREEMENT ("TERMS OF USE" OR "LICENCE AGREEMENT") CAREFULLY BEFORE YOU INSTALL OR USE THE OTTOBOCK SOFTWARE. BY INSTALLING OR USING THE OTTOBOCK SOFTWARE, YOU ARE AGREEING TO THE TERMS AND CONDITIONS OF THIS TERMS OF USE.

DO NOT USE THE OTTOBOCK SOFTWARE UNLESS YOU AGREE TO THE TERMS AND CONDITIONS OF THIS LICENCE AGREEMENT. IF YOU DO NOT AGREE TO THE TERMS AND CONDITIONS OF THIS LICENCE AGREEMENT, YOU CAN RETURN THE OTTOBOCK SOFTWARE TO THE LOCATION WHERE YOU ACQUIRED THE SOFTWARE. IF YOU ACQUIRED THE OTTOBOCK SOFTWARE JOINTLY AND IN CONJUNCTION WITH HARDWARE, YOU CAN RETURN BOTH THE HARDWARE AND THE SOFTWARE.

IF YOU DO NOT AGREE TO THE TERMS AND CONDITIONS OF THESE TERMS OF USE, YOU ARE NOT AUTHORISED TO INSTALL OR USE THE OTTOBOCK SOFTWARE.

### 1. Contractual partners and object of the agreement

1.1 By accepting these Terms of Use, you are entering into a contract between yourself and the named Ottobock company (hereinafter also "Ottobock"); however, if you are acting on behalf of a company when installing or using the Ottobock software (e.g. as an employee of said company), the contract is concluded between the company and Ottobock (in which case "you" refers to said company). In case of any doubt, you are a party to the contract.

1.2 The licence covers the Ottobock software, including any related documentation (referred to as "Ottobock Software" below). The terms and conditions of this licence agreement also apply to any updates to the Ottobock software that replace or amend the original software – where Ottobock provides them to you after the installation of the Ottobock software – unless such an update is the object of a separate licence agreement. Any possible maintenance of the Ottobock software or other Ottobock products is not covered by this agreement; a separate agreement is required.

1.3 To the extent that the Ottobock software will be used to provide recommendations regarding patient fittings (e.g. for certain adjustments to Ottobock products after taking customer measurements), please note that such suggestions merely represent non-binding recommendations from Ottobock. While Ottobock will take reasonable steps to ensure the suggestions are correct, it is not obliged to provide technically accurate recommendations. Accordingly, Ottobock is not liable for possible technical errors in the recommendations except in the case of intent or gross negligence.

Your own technical responsibility for correct patient fittings remains unaffected by the non-binding recommendations.

1.4 To the extent that training requirements are specified for the use of the Ottobock software, the software may only be used by qualified personnel.

1.5 Third-party software is provided without warranty "as is". Ottobock does not provide any warranty of any kind (warranty of merchantability, warranty of fitness for a particular purpose or warranty of non-infringement of rights) with respect to any third-party software.

## **2. Licence**

2.1 The Ottobock software is protected by national copyright laws in many countries and by international treaties. Ottobock will prosecute any violation of the copyrights it holds. You are only granted the right to use the Ottobock software to the extent required by law or expressly granted to you according to this licence agreement. Ottobock and/or its licensor(s) expressly reserve all ownership and/or other rights to the Ottobock software, including all copyrights, patents, business and trade secrets, trademarks and other intellectual property rights.

2.2 By accepting these Terms of Use, you are granted the non-exclusive and non-transferable right for 15 years to use the Ottobock software for your own purposes in accordance with its intended use, subject to any restrictions contained in these Terms of Use. "Own purposes" refers solely to the purposes of the respective contractual partner. In the case of medical supply companies or other companies that provide patient services related to Ottobock products (e.g. prosthesis adjustments), "own purposes" in terms of this licence agreement are also the purposes of the respective patient who wants to use the Ottobock products in accordance with their intended use.

2.3 You do not have the right to modify, edit, translate, rearrange, or otherwise alter the Ottobock Software nor to decompile, disassemble, or reverse engineer the Ottobock Software yourself or via third parties unless expressly permitted to do so by law.

2.4 You are authorised to install the Ottobock Software on several computers at the same time, or to use it on a network where the software can be accessed on more than one computer simultaneously. Making the software accessible to the public is not permitted. For the purposes of these Terms of Use, "computers" shall also be understood to mean those Ottobock products using the software according to its intended function.

## **3. Sublicences, assignment**

Issuing sublicences for the use of the Ottobock Software is prohibited. Renting, leasing, loaning, or otherwise temporarily ceding the Ottobock software to a third party is also prohibited.

The permanent assignment of the usage rights granted to you is only possible when:

- the third party to whom the rights are to be assigned accepts the terms and conditions of this licence agreement,
- the entire Ottobock software, and not just parts thereof, is assigned, and
- you do not retain any copies of the Ottobock software, not even in the main memory or cache of your computer.

## **4. Liability**

Ottobock is liable to you according to the provisions of the Product Liability Act; in case of intent or gross negligence; for the loss of life, physical injury or the impairment of health; where Ottobock issues any guarantees; and in other cases of mandatory legal liability – respectively pursuant to the applicable legal regulations. Damages shall be limited to an amount representing typically foreseeable damages. Damage compensation claims against Ottobock in case of slight negligence are excluded.

Any other claims for compensation by you against Ottobock – no matter on what legal grounds and especially due to material defects, defective title and/or the breach of other obligations arising from the contract on the part of Ottobock, its legal representatives, employees, or assistants or due to illegal acts – are excluded.

To the extent that the liability of Ottobock is limited or excluded by the preceding provisions, the same applies to the personal liability of the legal representatives, employees or vicarious agents of Ottobock.

The preceding provisions do not affect the burden of proof to your detriment. Claims for compensation on your part expire within the legal period of limitation, starting at the beginning of said period as established by law.

Ottobock is not liable for specific fitness or specific characteristics of the Ottobock software.

All claims shall be excluded if you fail to use and operate or modify the software expertly and properly and/or if you combine or operate the software with unsuitable components.

## **5. Applicable law and jurisdiction**

This licence agreement shall be subject to the laws of the country in which the manufacturer is domiciled. The UN convention on contracts for the international sale of goods does not apply. The exclusive jurisdiction for all disputes arising from or in relation to this licence agreement is the registered office of the manufacturer.

## **6. Severability clause**

Should one or more provisions of this agreement be or become ineffective or unenforceable in whole or in part, the validity of the remaining provisions of the agreement shall not be affected.

Any arrangement, change or addition (particularly commitments with respect to characteristics, features or the quality of the software product) in connection with these Terms of Use shall be deemed void unless made in writing and unless Ottobock's prior consent has been obtained.



Otto Bock Healthcare Products GmbH  
Brehmstraße 16 · 1110 Wien · Austria  
T +43-1 523 37 86 · F +43-1 523 22 64  
info.austria@ottobock.com · www.ottobock.com