



ottobock.

On your mark,
get set, click!

Quality for life

Information for practitioners

On your mark, ...

Life is spontaneous and a transfemoral prosthesis does not have to take away this spontaneity. The ClickValve can help.

The ClickValve automatically expels air between the socket and residual limb under load, thereby assuring a firm fit for your prosthesis.

... get set, click!





A lifetime is precious, my time is precious. That is why I want to make it as useful and valuable as possible.

I love experiencing distant countries and foreign cultures. We have walked on the Great Wall of China, touched the pyramids in Egypt and were greeted by the sun in Namibia. I enjoy travelling and nothing can take that away from me.

In my garden I can see that time has various facets. I like to observe how nature changes over the course of the seasons. The evenings are especially enjoyable - when my wife and I sit in the garden with a glass of wine, time seems to stand still around us.

«The sum of our lives are the hours in which we loved.» (Wilhelm Busch) This is why I do not want to waste a single hour, but make use of all my time.

🕒 8:23 am



🕒 8:57 am



🕒 9:15 am

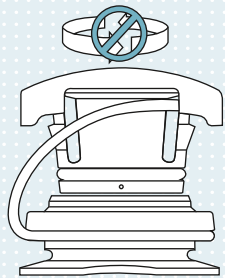


🕒 10:15 pm

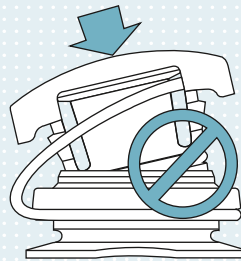


Threadless design + conical shape = extremely easy handling

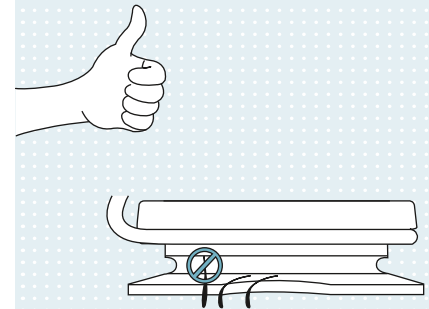
The threadless design (fig. ①) of the ClickValve eliminates the tedious process of threading in the upper valve part. Difficult positioning (fig. ②) and the pain of trapped hairs (fig. ③) when inserting your valve are a thing of the past. The ClickValve is also easy to grasp thanks to the special opening mechanism, and can be inserted into the lower valve part much more readily due to its conical shape compared to flat rubber valves and screw valves. Tools such as a spanner are no longer needed for opening and closing the valve.



①



②



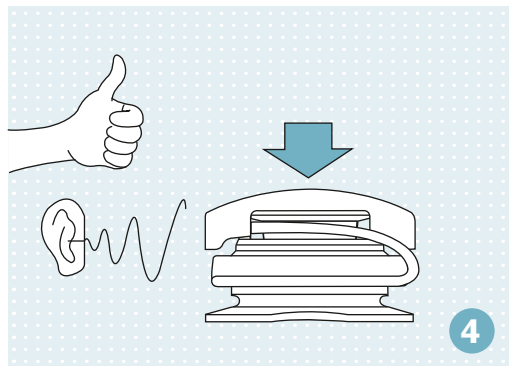
③

Safety leash to prevent valve loss

The multi-optional safety leash for the ClickValve prevents loss of the upper valve part during opening and closing, thereby ensuring that you always have ready access to the valve on your prosthesis. On the other hand, you may choose to forgo this option in favour of a smaller valve.

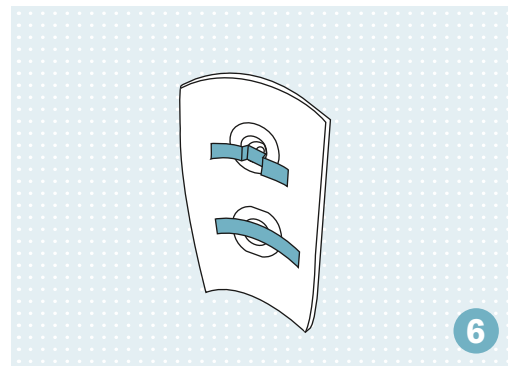
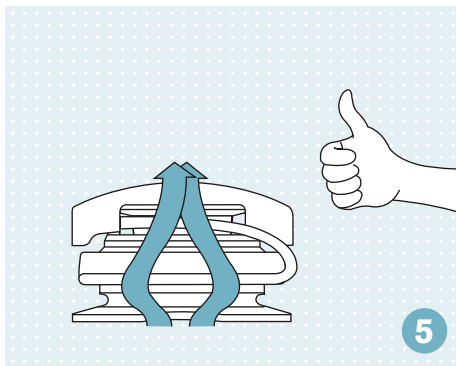
The system with the “click”

A clearly audible «click» (fig. 4) confirms that the valve is seated properly. Continuing to push the air discharge button is not necessary, since air in the socket is ejected automatically. This creates a vacuum in the socket.



No residual limb haematoma

In order to reduce the risk of haematoma (fig. 5) on your residual limb, we have ensured that the valve system is entirely flush (fig. 6) on the inside of the socket and the air exhaust openings are skilfully positioned. This contributes to your everyday comfort.





Easy handling.

Can be easily opened and closed without turning or the use of force, and locks securely in place with a “click”.

Advantages of the ClickValve at a glance:

- **Threadless design** for easy opening and closing. Over tightening and trapped hairs are a thing of the past.
- **Conical shape** for easy insertion in the lower valve part.
- **Multi-optional safety leash** prevents loss of the upper valve part, thereby ensuring that you always have ready access to the valve on your prosthesis.
- **The “click”** offers audible feedback for proper valve positioning.
- **Prevents haematomas.**

Please contact us if you have any further questions or would like more information.

Otto Bock HealthCare GmbH
Max-Näder-Straße 15 · 37115 Duderstadt/Germany
T +49 5527 848-0 · F +49 5527 848-1524
export@ottobock.de · www.ottobock.com