

Derma Functional Accessories

Perfect skin care



The Skin's Function

As an external organ, the skin protects the body against the outside world's harmful effects. At the same time, the skin establishes contact with the outside world and is an important sensory organ that receives and transmits stimuli and sensations.


Protection Against Pressure and Friction

To protect against pressure and friction, healthy skin is often thicker in certain areas, such as the palms of the hands and soles of the feet. However, because the skin can be subjected to various environmental effects, it can become too thick or thin or undergo other unwanted changes.

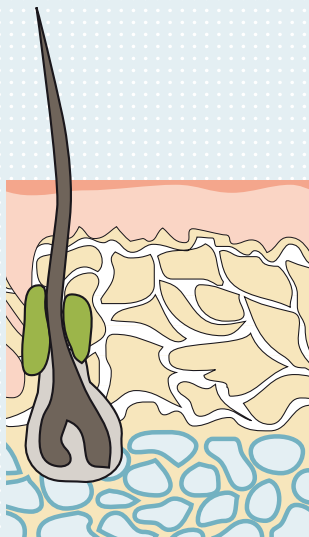
Severe stresses to the skin usually result in pressure and friction pain as well as sores and chafe marks.

When the epidermis is intact, the acid and fat mantle provides protection against chemicals and microorganisms. The chemical reactivity of the skin, the so-called acid mantle, is in the low acidity range with a pH value of 4.6 – 6.0. When this protective function is damaged, skin infections and irritations are common. These conditions are often caused by improper cleaning and poor hygiene, or because irritated skin is vulnerable to bacteria, viruses and fungi.





The skin of prosthesis and orthosis wearers is subjected to particularly high stresses. Protection and regeneration are especially important here. Derma functional accessories are free of preservatives, dyes and perfumes – making them a perfect solution for sensitive skin. To keep you active with as little restriction as possible.



- 1 Epidermis
- 2 Dermis, or corium
- 3 Hypodermis, or subcutaneous tissue

The Skin's Structure and Function

The skin is the largest organ of the body and is made up of three layers

1 The epidermis

is the outermost surface of our body and is therefore directly exposed to the environment. It is made up of different layers of keratogenic cells.

2 The dermis

contains blood vessels and nerves with special end organs that are sensitive to pressure, touch, pain, hot and cold, and itchiness.

3 The subcutaneous tissue

is primarily fatty tissue, along with larger blood vessels and thick nerve fibres. The hair roots are also found in this layer along with the sebaceous glands and sweat glands.

Sensitive and irritated skin?

What matters and what you can do

For people wearing a prosthesis or orthosis, unavoidable mechanical stresses can have adverse effects on the skin's function. There is often a close correlation between these causes and effects.

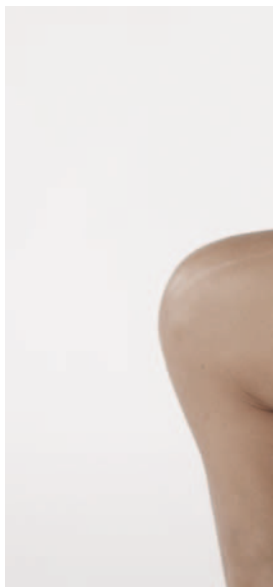
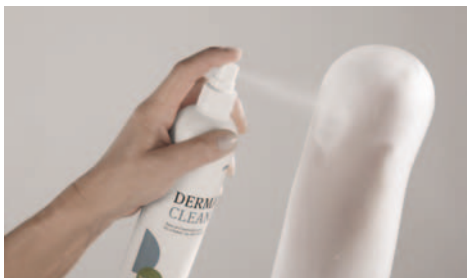
The main problems are:

Pain with pressure and friction, soreness

- Build-up of perspiration and odour
- Damage to the skin's protective and immune functions
- Excessive hygiene or incorrect cleansing of the weakened skin

What you can do:

The Derma series offers a selection of skin care products that have been especially adapted to the needs of prosthesis and orthosis wearers: Derma Clean, Derma Prevent and Derma Repair.



Hints for Optimal Residual Limb Care

Hints on Residual Limb Cleaning

Apply Derma Clean cleansing lotion to the skin, wash and then rinse thoroughly with clear water and dry.

Hints on Liner Cleaning

Turn the liner inside out and wash it using Derma Clean. Then rinse thoroughly with clear water and wipe with a clean, dry cloth. Now let the liner air dry.



Hints on the Application of the Derma Skin Care Series

We recommend performing the task of daily cleaning in the evening to allow the residual limb sufficient time for drying. This will help to prevent extreme adhesion of the liner on the skin. When cleaning is done in the morning, make sure that the residual limb is dry before donning the liner.

Should the residual limb feel too moist in the morning, reduce the amount of Derma Repair / Derma Prevent lotion.

After cleaning the skin with Derma Clean cleansing lotion, generously apply Derma Repair basic skin care to dry, irritated skin.

Apply a small amount of Derma Prevent to the skin prior to donning the prosthesis or orthosis. Put a few drops on the palm of your hand and rub it into the skin until it is dry. Shake well before using!

Derma

The special skin care and protection system for severely stressed skin.

453H10 Derma Clean

- Cleans gently and safely
- Ph-neutral, free of alkali and phosphates
- Anti-bacterial formula

Content: 300 ml

453H14 Derma Repair

- Moisturises dry, irritated skin
- Reduces the effects of excessive strain and soothes irritated skin
- Antibacterial formula: helps assist the skin's defence system against harmful environmental effects
- Regulates moisture and makes the skin noticeably more supple and elastic

Content: 200 ml

453H12 Derma Prevent

- Prevents chafing
- Inhibits contact with external allergens
- Covers the skin with a protective coating
- Leaves the skin soft and supple
- Reduces perspiration and eliminates odour by releasing an active substance when needed

Content: 100 ml

453H30=GB

Derma Functional Accessories Set

The Derma Functional Accessories Set contains:

- 453H10 Derma Clean
- 453H14 Derma Repair
- 453H12 Derma Prevent

Plus a practical toilet bag



Otto Bock HealthCare GmbH
Max-Näder-Straße 15 · 37115 Duderstadt/Germany
P +49 5527 848-1424 · F +49 5527 72330
export@ottobock.de · www.ottobock.com