

# Empower 1A1-2.

## Restore your power.

Empower was designed for active individuals who navigate varied indoor and outdoor environments and place a high value on the ability to cover longer distances and walk faster.

### Designed for optimal outcomes:

- The only commercially available prosthetic foot with powered propulsion
- Microprocessor-controlled prosthetic foot with real-time adjustment
- Emulates lost muscle function by actively supplying energy at toe off<sup>1</sup>
- Active plantar flexion during loading of the limb provides extra comfort when walking and increased stability when walking downhill on slopes<sup>2</sup>
- Taleo Low Profile base spring for smooth rollover and optimal adaptation to varying ground conditions
- Relief function for a more natural appearance when sitting and relief of residual limb
- May help to reduce knee and lower back pain<sup>3</sup>
- Splashproof (IP24)

More than a foot. A foundation.



### Technical data

<b>K-Level</b>	K3
<b>Max. body weight</b>	287 lbs (130 kg)
<b>Side</b>	left (L), right (R)
<b>Sizes</b>	25-30 cm
<b>Weight without footshell*</b>	4.3 lbs / 1950 g
<b>Footshell shape</b>	Normal shape with +/- 10mm heel height
<b>Footshell color</b>	beige (4), light brown (15)
<b>Weight with normal footshell*</b>	4.7 lbs / 2145 g
<b>Build height w/ normal footshell*</b>	8 3/4 In / 221 mm
<b>Range of motion</b>	22° (plantar flexion)

\*Reference size is 27 cm

<sup>1</sup>Esposito, E. et al. 2016; Herr, H. et al. 2012

<sup>2</sup>Gates, D. et al. 2013

<sup>3</sup>Kannenberg A. et al. 2020 (in peer review process)



# Empower 1A1-2.

## Ordering chart

Body weight lbs (kg)	Foot size and stiffness					
	25 cm	26 cm	27 cm	28 cm	29 cm	30 cm
132 – 149 (60 – 67)	3	3	3	–	–	–
150 – 170 (68 – 77)	4	4	4	4	–	–
171 – 195 (78 – 88)	5	5	5	5	5	5
196 – 220 (89 – 100)	6	6	6	6	6	6
221 – 254 (101 – 115)	–	7	7	7	7	7
255 – 287 (116 – 130)	–	–	8*	8*	8*	8*

\* Do not combine this configuration with a 3C88-3/3C98-3 C-Leg 4.

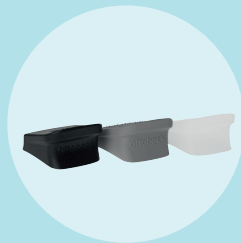
## Scope of delivery

Includes the 1A1-2\* Empower, 2C16\* footshell, 2F50\* heel wedge set (comprising three different degrees of hardness), 757B38 battery (x2), 757L38 dual bay charger, 757L39 power supply, BM-214\* power cord, and a black Spectra sock.

## Components & Accessories



1A1-2\*  
Empower



2F50\*  
heel wedge set



SL=Spectra-sock-7  
Spectra sock



2C16\*  
footshell



757B38  
battery (x2)



757L38  
dual bay charger



757L39  
power supply



BM-214\*  
power cord



743Y840=V1  
Empower tablet

## Setup

The tablet-based Setup App provides clinicians step by step guidance through the Empower fitting process. The tablet is delivered with the first order and the Setup App is available upon completion of the Empower qualification training course.

## Warranty

Ottobock provides its standard warranty of three (3) years on the Empower (ankle and carbon foot) and the battery charger, one (1) year on the battery and tablet, and six (6) months on the footshell. As an alternative, a 6-year warranty package is offered. The warranty can be extended to 6 years at any time prior to the standard 3-year warranty expiration date.